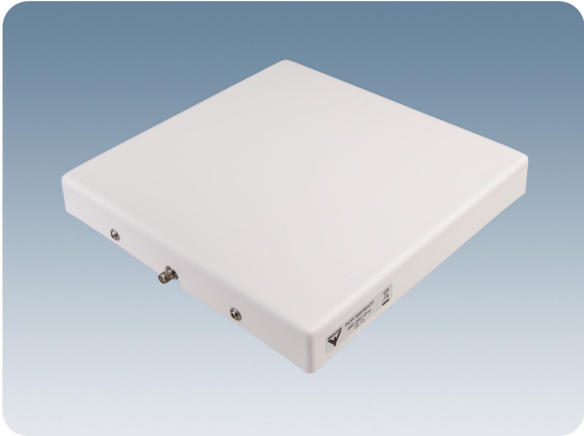


PCPI 900/RHCP

Indoor Right Hand Circularly Polarized Patch Antenna for mounting on Wall or Ceiling

DESCRIPTION

- Low profile antenna for the 900 MHz Band.
- PCPI 900/RHCP is a Right Hand Circularly Polarized patch antenna for indoor use.
- Circularly polarized antenna is chosen to avoid out-of-phase signals.
- Specially designed for closed rooms.
- Covers approx. 80 MHz with a radiation of approx. 7 dBic.
- Full size 2λ circular patch antenna.
- The antenna is carefully sealed with a discreet white cover.
- The connector is placed at one side to enable mounting close to a wall or a ceiling.



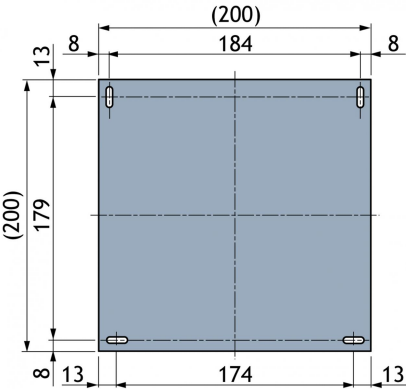
ORDERING DESIGNATIONS

TYPE	PRODUCT NO.
PCPI 900/RHCP	100000159

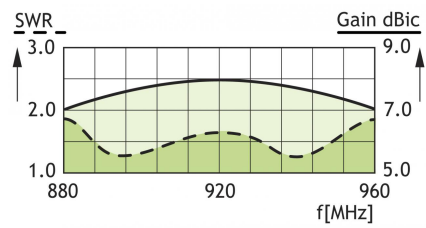
SPECIFICATIONS

ELECTRICAL	
MODEL	PCPI 900/RHCP
ANTENNA TYPE	Right Hand Circularly Polarized patch antenna
FREQUENCY	880 - 960 MHz
IMPEDANCE	Nom. 50 Ω
POLARIZATION	Circular
GAIN	Approx. 7 dBic
BANDWIDTH	\geq 80 MHz
HALF-POWER BEAMWIDTH	Approx. 80° (H- and E-plane)
SWR	\leq 2.0
MAX. POWER	50 W
MECHANICAL	
CONNECTOR	SMA-female
COLOUR	Marine white
MATERIALS	Cover: ABS Chassis: Aluminium
SIZE (L x W x H)	Approx. 204 x 204 x 28 mm
WEIGHT	Approx. 0.4 kg
MOUNTING	For mounting on wall or ceiling \varnothing 4.5 x 20 mm (4 holes)

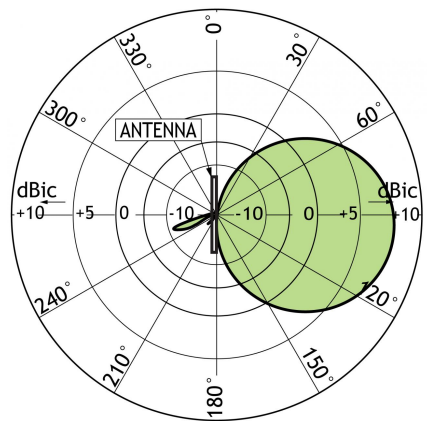
MOUNTING DETAILS (Dimensions excl. cover)



TYPICAL GAIN AND SWR CURVES

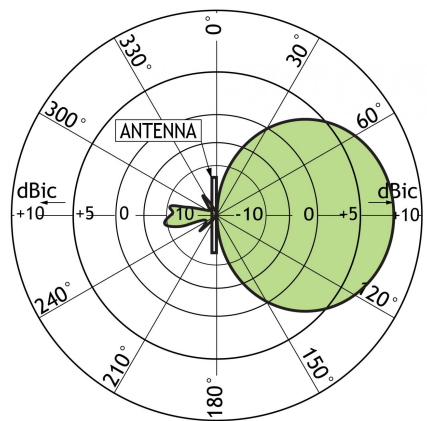


TYPICAL RADIATION PATTERN (E-PLANE)




This curve shows the radiation patterns in the vertical plane.

TYPICAL RADIATION PATTERN (H-PLANE)



This curve shows the radiation patterns in the horizontal plane (horizontal coverage).

 PROCOM A/S reserve the right to amend specifications without prior notice.
19/12/13